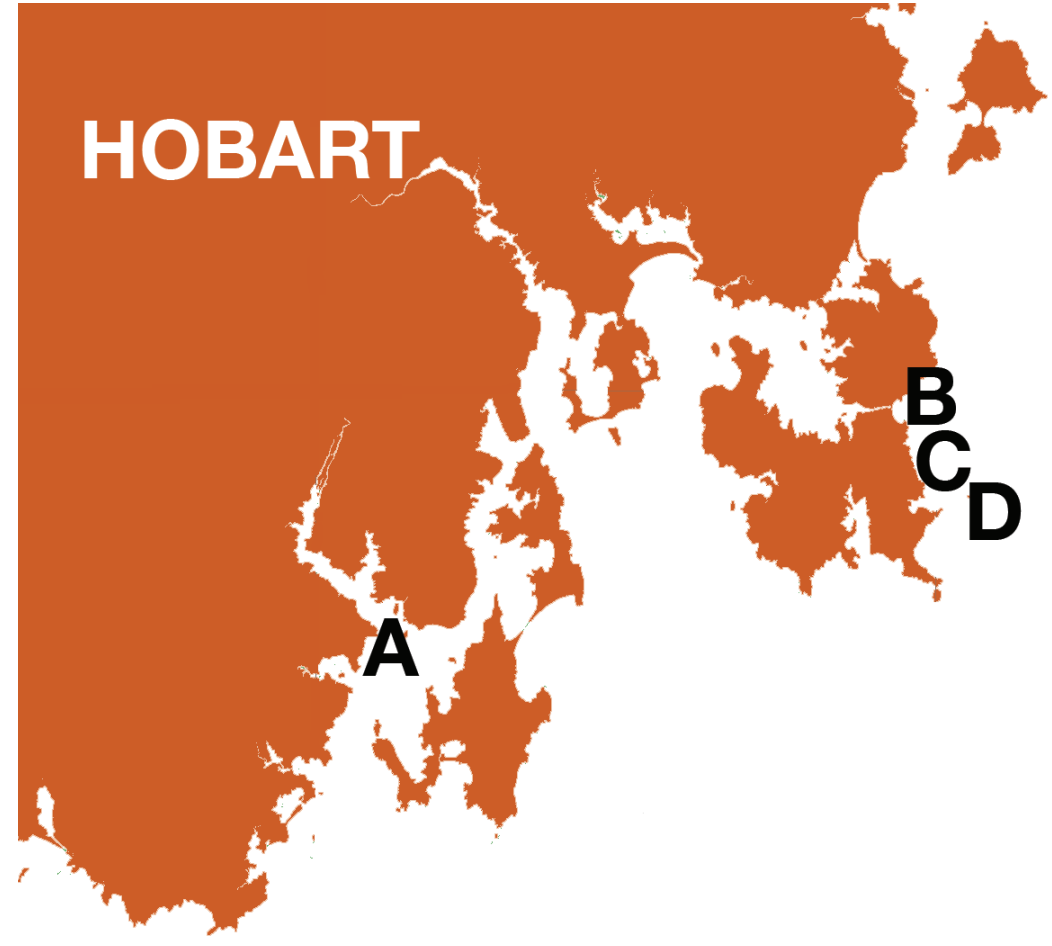


CERF inshore habitat mapping in the South East of Tasmania

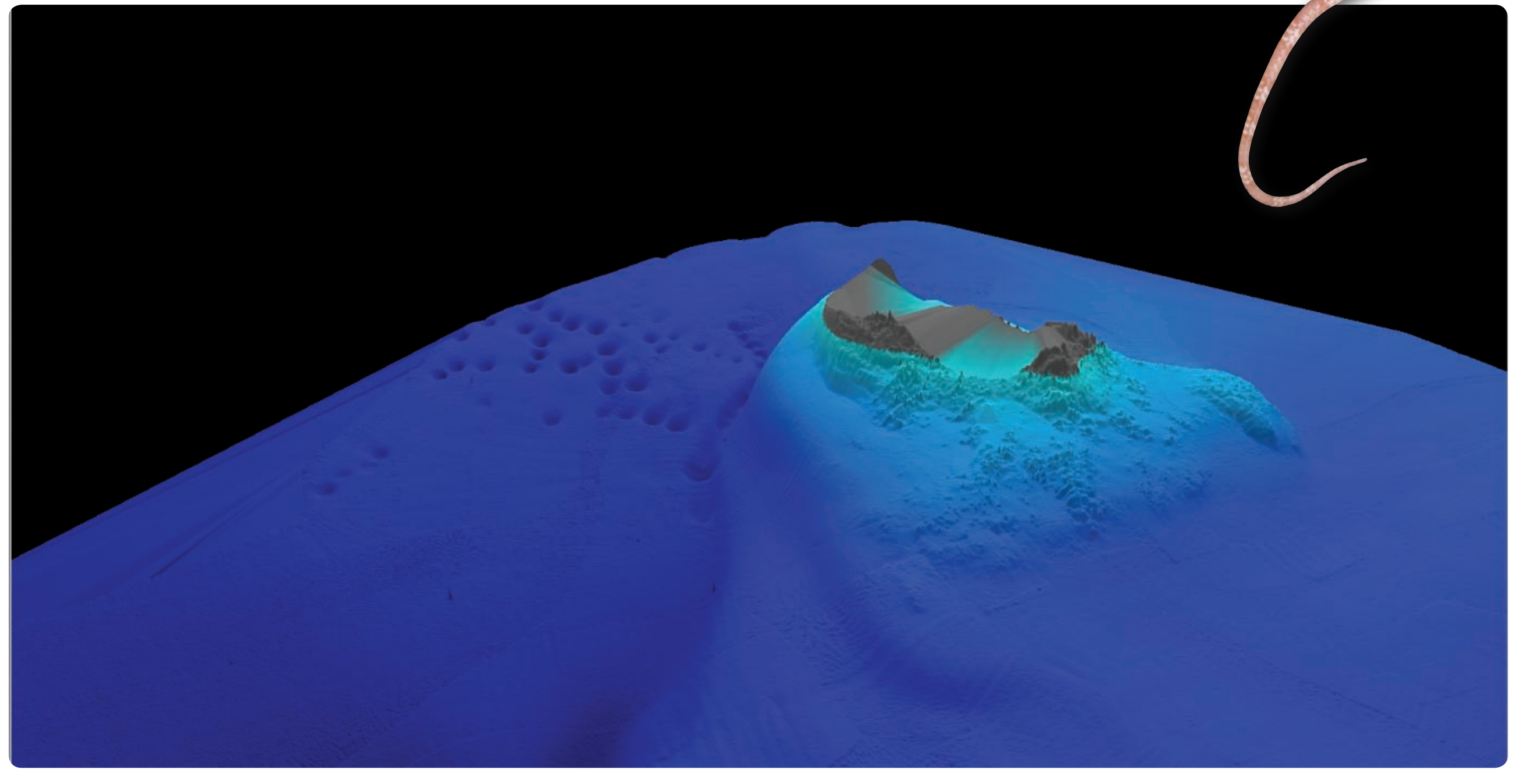
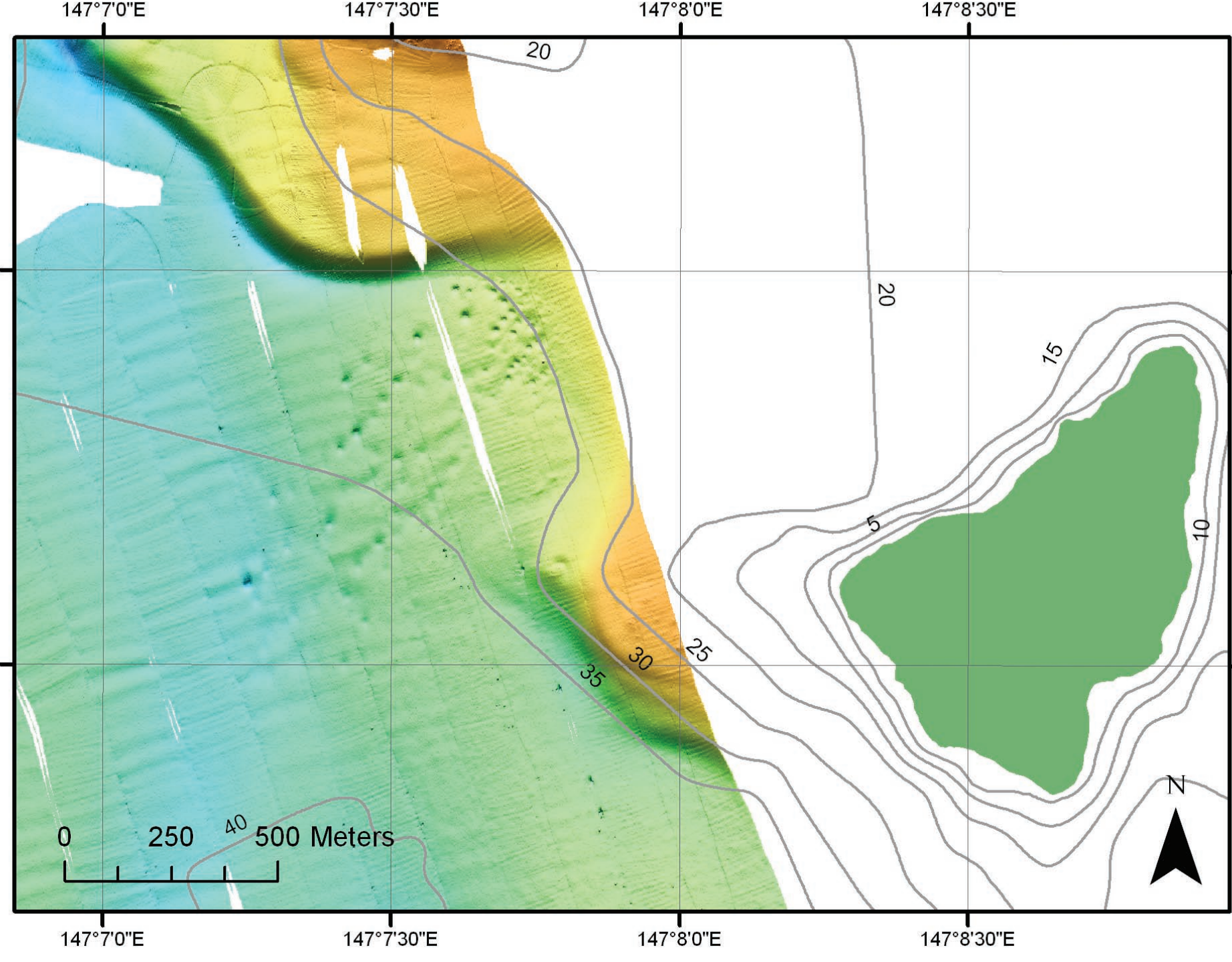


The first comprehensive multibeam surveys within the CERF Marine Biodiversity Research Hub were conducted in June 2008 and revealed an unprecedented level of habitat detail in this region.



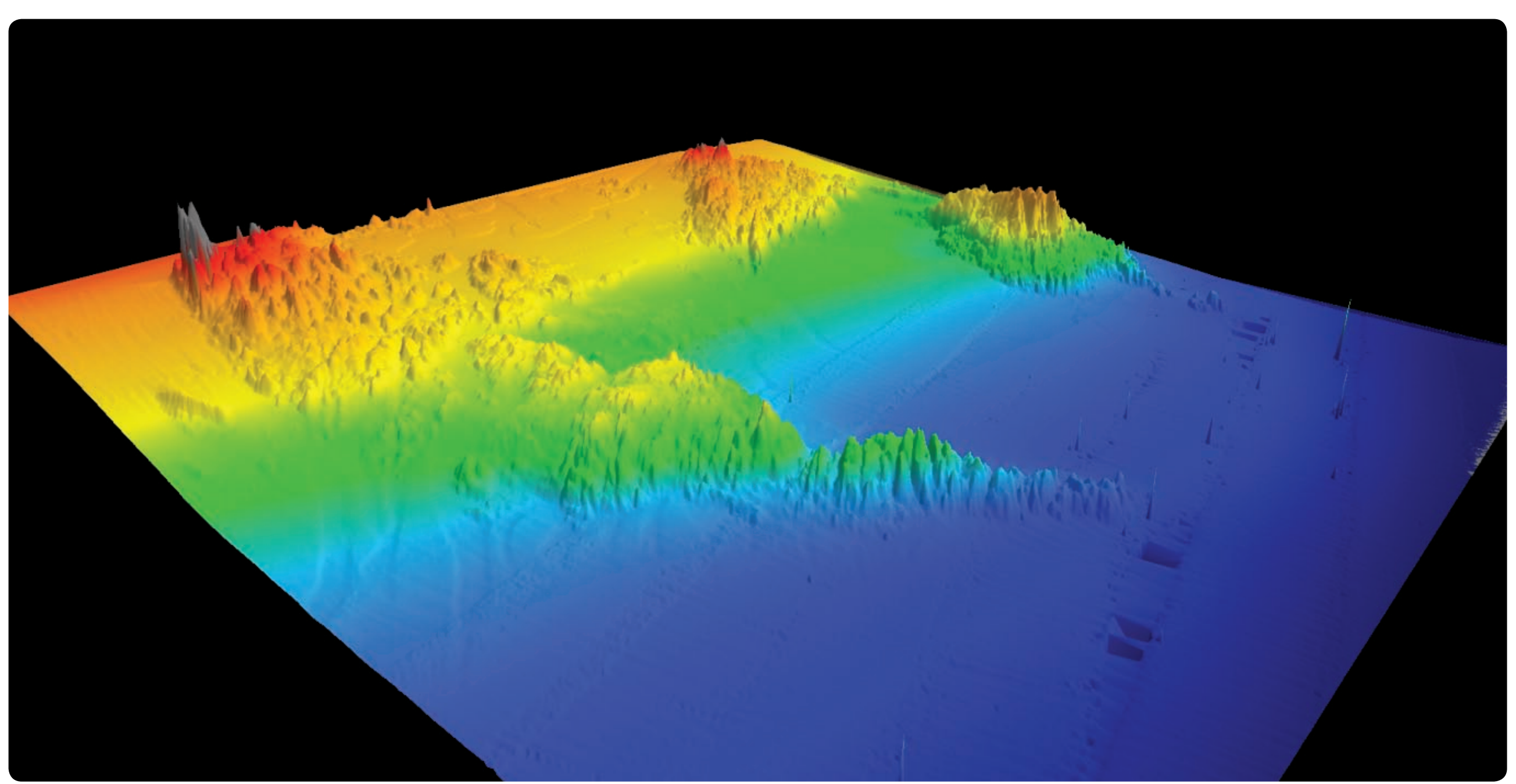
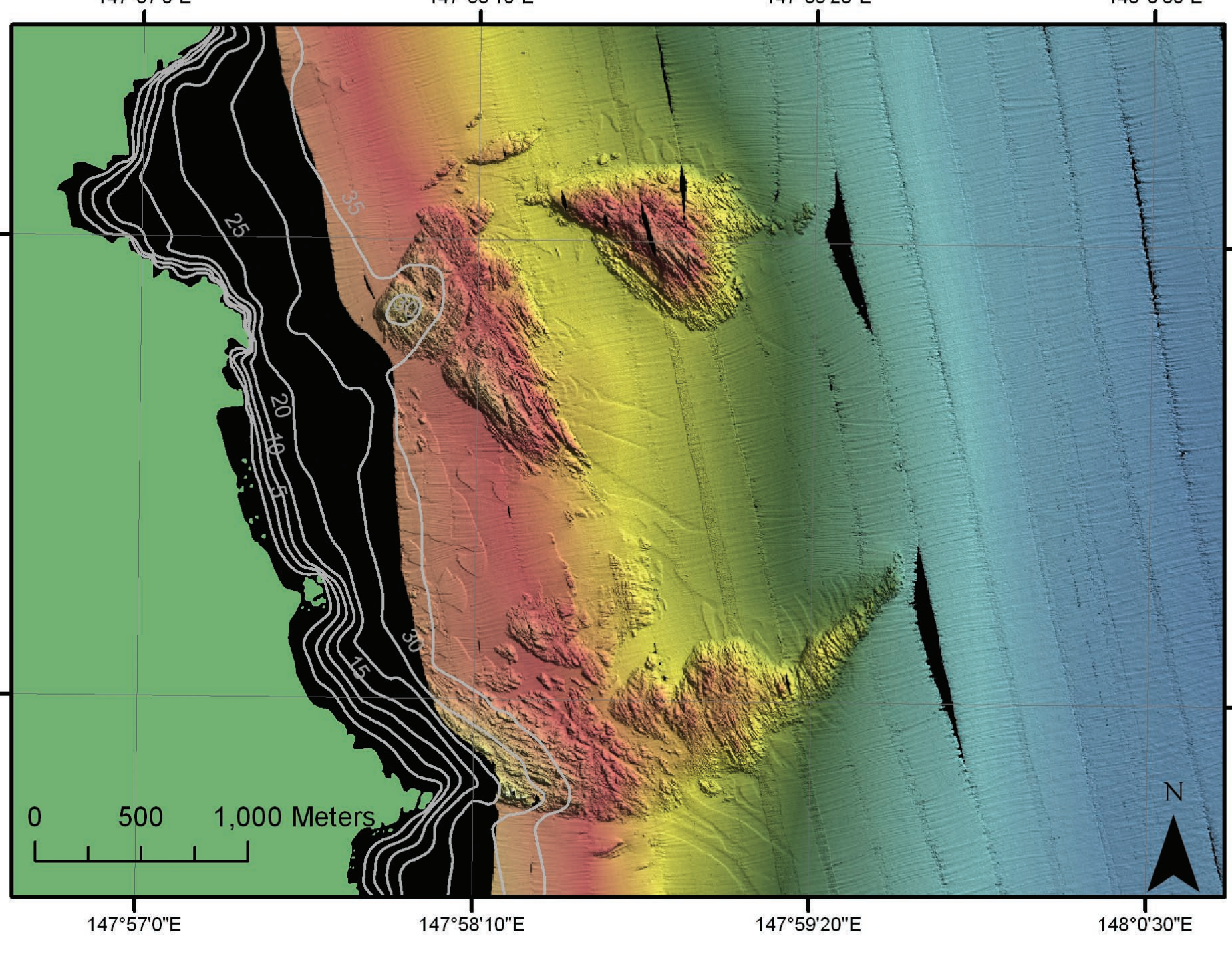
→ A: The Huon

Mapping at the Huon River mouth revealed historical river valleys and circular depressions of unknown origin in the soft sediments.



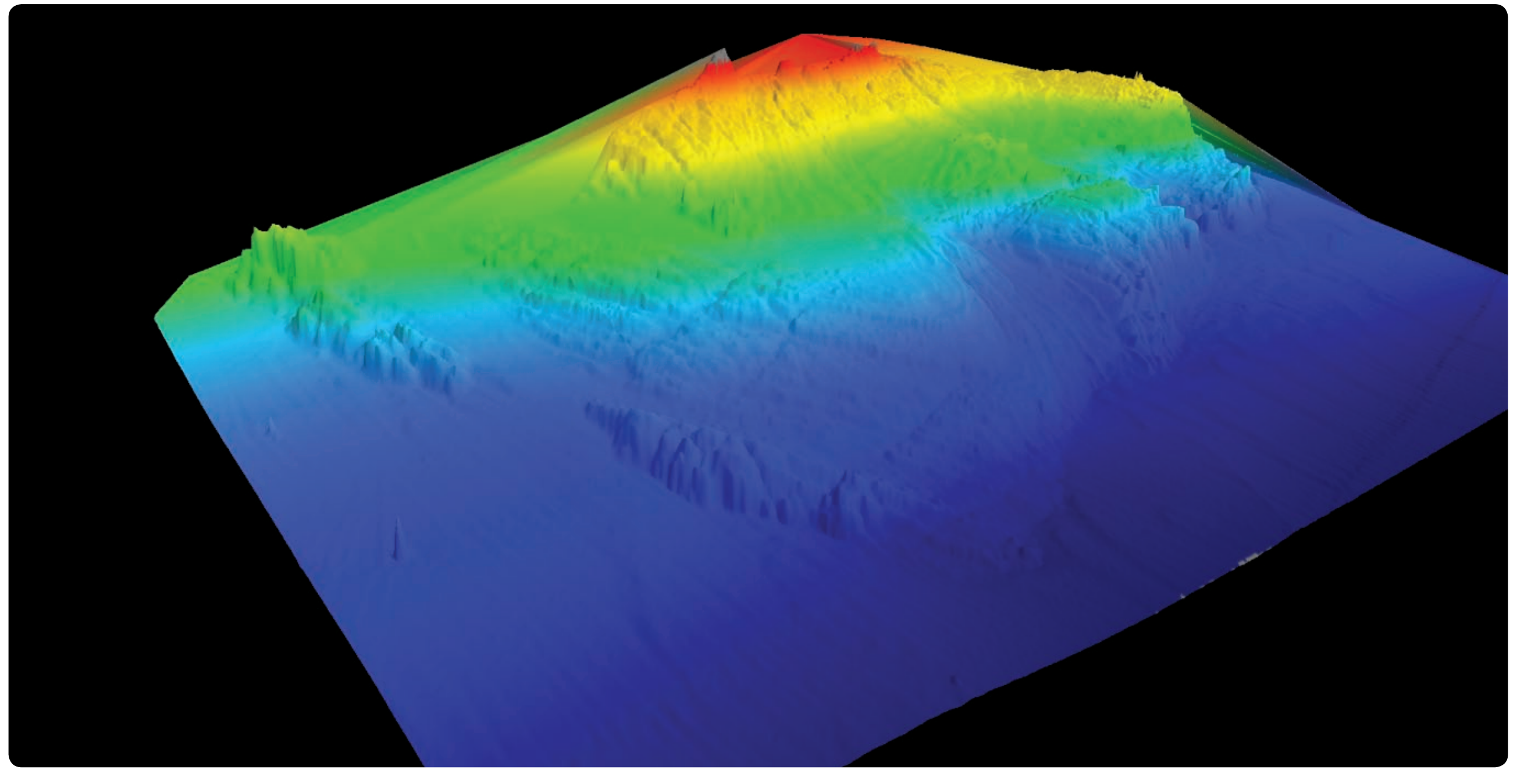
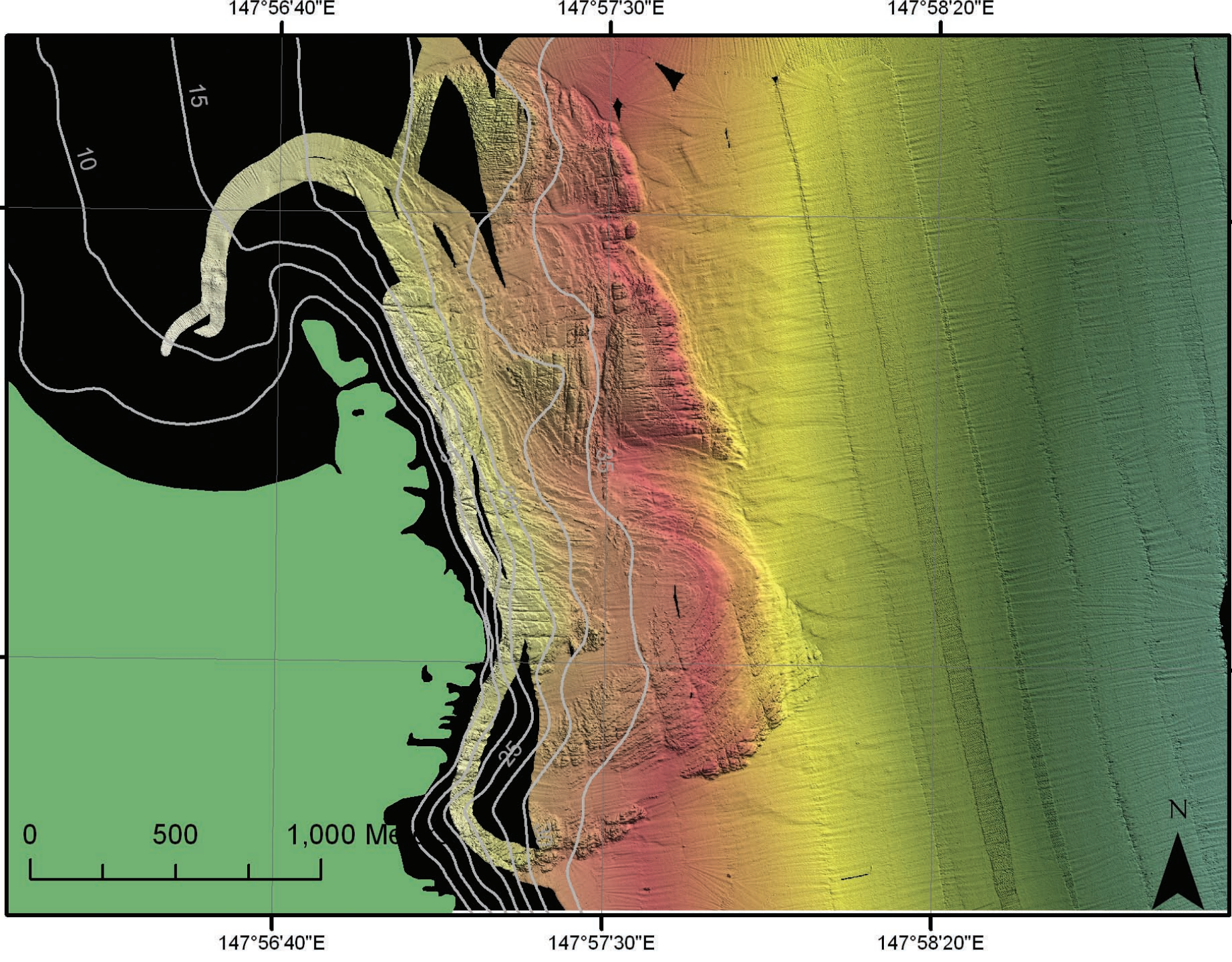
→ B: O'Hara Bluff

O'Hara Bluff mapping exposed a previously unknown offshore extension of complex sandstone reef.



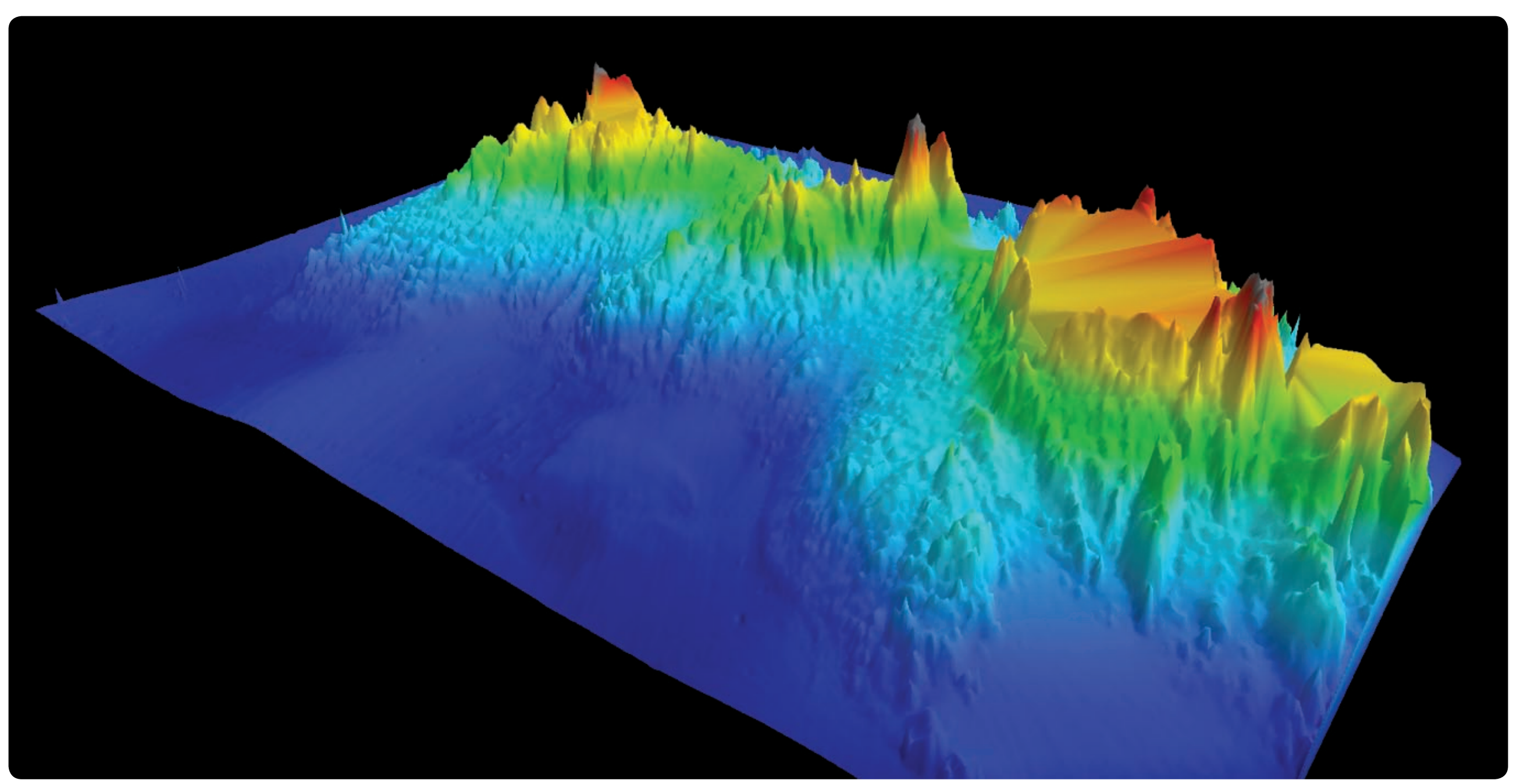
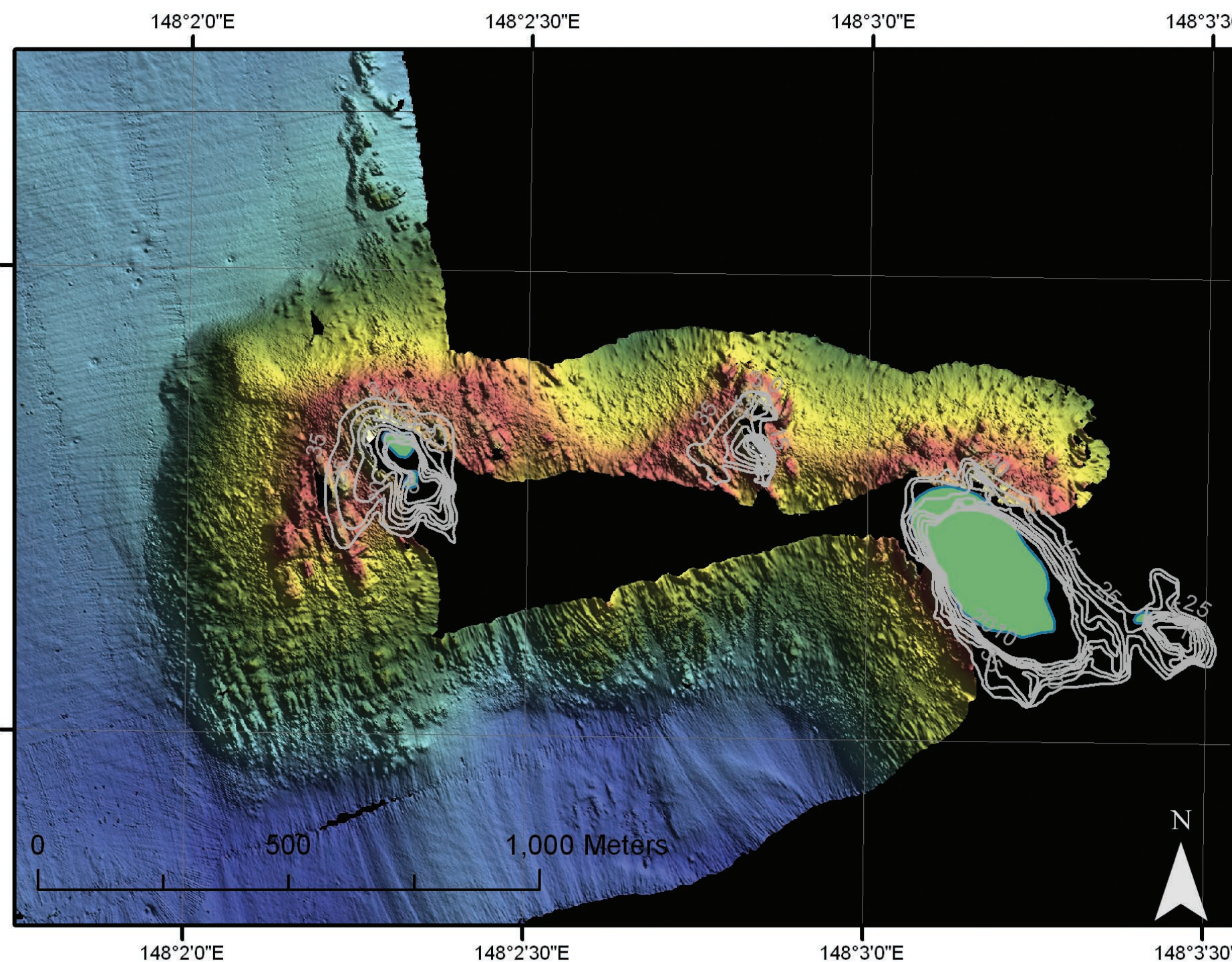
→ C: Pirates Bay

East of Pirates Bay geological variation in the reef structure was revealed, including sandstone bedding features to the south and dolerite block features to the north.



→ D: The Hippolyte

South of Pirates Bay the Hippolyte rises as an iconic island feature. Mapping revealed the complexity and significant extent of this granite reef structure.



The graphics above were produced with EonFusion (Myriad)