

From marine survey design to reporting

- Survey design.
- Pre-survey preparations, including checklist, equipment list and information on permitting.
- Onboard procedures, including deployment and retrieval.
- Post-survey procedures, including quality control.
- Data discoverability and accessibility.
- Post-survey report template.

Created by researchers

- **Practical:** step-by-step instructions are given for pre-survey planning, gear use and troubleshooting, and data management.
- **Collaborative:** more than 70 people from 30 agencies (including through the Integrated Marine Observing System and Australian Ocean Data Network) contributed to these field manuals, improving the content and increasing the potential for adoption across multiple agencies and monitoring programs.
- **Dynamic:** the manuals will be updated regularly to include new technological and scientific developments, including those related to data discoverability and accessibility.
- **Responsive:** feedback is encouraged from potential users and stakeholders to improve future versions and can be provided at:

www.surveymonkey.com/r/NZRLMHB

Further information and field manuals

www.nespmarine.edu.au/field-manuals



CONTACT

Dr Rachel Przeslawski

rachel.przeslawski@ga.gov.au



IMAS/Asher Flatt

This research is supported by the National Environmental Science Program Marine Biodiversity Hub, an Australian Government initiative providing information and understanding to support marine biodiversity management and conservation.



National Environmental Science Programme

Field manuals

for marine sampling

TOWARDS A NATIONAL
MONITORING PROGRAM

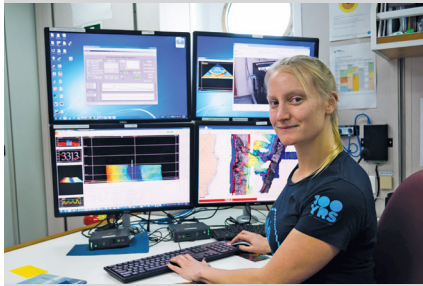
We have developed a suite of field manuals to ensure that data collected by seafloor-sampling platforms at different times and places across Australia are directly comparable.

Why should I use the field manuals?

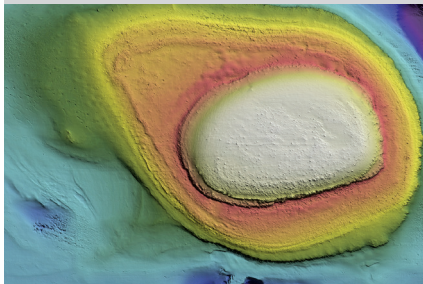
The *Marine Sampling Field Manuals for Monitoring Australia's Marine Waters* support the national-scale monitoring and observing of Australia's marine environment. They provide consistent, defensible methods to ensure that the data you collect can be compared with other regional and national collections. This will increase your data's relevance to others and offer expanding national datasets to you. The manuals are endorsed by researchers, managers, and technicians from multiple agencies with a variety of experience and subject-matter expertise.



Multibeam Echosounder



CSIRO/Asher Flatt



Geoscience Australia

Sled and Trawl



CSIRO/Museums Victoria



CSIRO/Asher Flatt

Grab and Box Corer

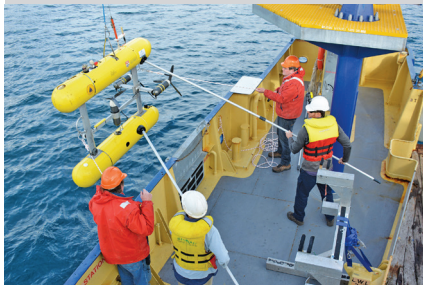


Geoscience Australia



CSIRO/Asher Flatt

Autonomous Underwater Vehicle

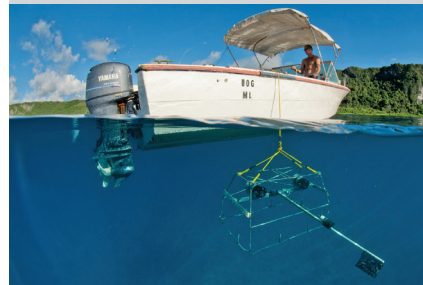


Lainey James, IMAS



IMAS

Baited Remote Underwater Video

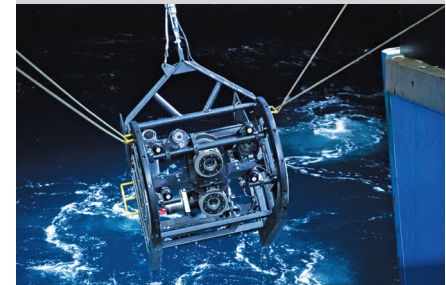


Steve Lindfield

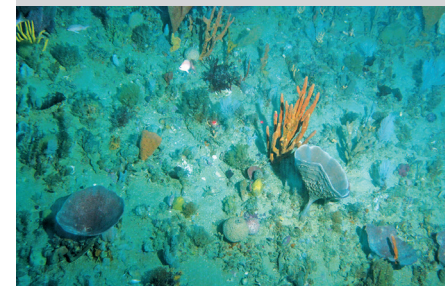


Curtin University

Towed Imagery



CSIRO/Asher Flatt



IMAS

Caroline Harding, Museums Victoria